

# Christ Church C of E Primary School

Weekly Newsletter - May 17th



## Key Dates

- **20th, 21st May 2024 - School Book Fair**
- **22nd May—4:30pm—Premier Education parent meeting**
- **20th-24th May—15 Mile Challenge Fundraiser**

## ATTENDANCE

Whole School—95.85%  
Top Class Attendance - Green  
Class 99.33%  
Top Class Attendance for Half Term— Green  
Class %

To each and every Year 6, you have done it! SATs are finished! We are so proud of each and every one of you!

Year 6





# HAPPY NEWS



USA

## The Hawaii hand gesture

Hawaii has become the first US state to have an official hand gesture. The 'shaka' is said to reflect Hawaii's good vibes and relaxed lifestyle. Kayak instructor, Ryan Arcia, said "If you say thank you, you give someone a shaka. If you see someone you know, you throw a shaka. If you're letting somebody into your lane on the highway, you throw a shaka!" Here's how to do it: Clench your fist but keep your thumb and little finger extended.



WORLDWIDE

## Comedy pet photos

The 2024 Comedy Pet Photo Award finalists have been announced - and they are sure to make you howl! Every year, pet owners from all over the world compete to see who can take the silliest picture of their furry friends. You can check out the finalists over on the CBBC Newsround website!



UK

## Meet the skipping ninja

This Mental Health Awareness Week, we'd like you to meet Skip Beatz, the skipping ninja! Pete Thompson (as he is more formally known) is a five time skipping world-record holder and believes in the power of exercise to boost children's wellbeing. He often attends schools for special assemblies that get kids up and moving. This Mental Health Awareness Week is raising awareness of the impact of physical activity on our wellbeing, how can you move for your mental health today? Why not try some skipping?



UK

## Butterfly count returns

Last year, the Big Butterfly Count was a huge success. Not only did it find that butterfly numbers increased, but the people who took part reported feeling calmer, happier and more connected to nature! The charity behind the count has now confirmed that it will return again this year. During July and August, people across the UK will be encouraged to count, track and log the butterflies they come across, all in the name of science research!





# MAKE YOUR OWN WORM FARM!



Book on to this hands-on workshop where you can learn how to create your **own worm farm!** Join us for a fun and educational experience where you'll get your hands dirty while helping the environment. Discover the benefits of worm composting and how easy it is to maintain your very own worm farm. No prior experience needed, just bring your enthusiasm and curiosity!

Our knowledgeable instructors will guide you through the process, providing all the necessary materials and step-by-step instructions. By the end of the session, you'll leave with your homemade worm farm and the know-how to continue composting at home.

**Wednesday 29th May at Sconce and Devon Park**

**10-10.45am**

**11-11.45am**

**1-1.45pm**

**BOOK NOW!**

Come join us and get ready to make a positive impact while creating a sustainable solution for your kitchen waste. Don't miss out on this opportunity to learn a new skill and contribute to a greener future!

Email [communityengagement@nsdc.info](mailto:communityengagement@nsdc.info) to book your place on one of the timeslot above. Alternatively for more information call Jenny Palmer on **01636 650000**.





Renee Mascari  
artwork featured in  
our Art Auction in 2023

# CHARITY ART AUCTION



Imara is a Nottingham based charity empowering children and families to move forward from the impacts of sexual and domestic abuse, by providing art therapy and support around the criminal justice process. We are raising vital funds to keep supporting children and families in Nottingham.

Art will be on display between:

## 22nd - 28th July 2024

Open Daily at Nottingham Society of Artists (near the Castle)

Silent bids and online bidding available

Join us for our evening event, with refreshments and networking!



25th July  
2024



6:00PM -  
8:00PM



Nottingham Society  
of Artists, NG1 6DH



scan for art here

 **CALL FOR  
ARTISTS!**

IMARA ARE LOOKING FOR DONATIONS OF  
ARTWORK FOR OUR AUCTION! PLEASE EMAIL  
[INFO@IMARA.ORG.UK](mailto:INFO@IMARA.ORG.UK) FOR MORE INFORMATION!

ACTIVE NEWARK CIC PRESENTS

# MAY HOLIDAY FOOTBALL

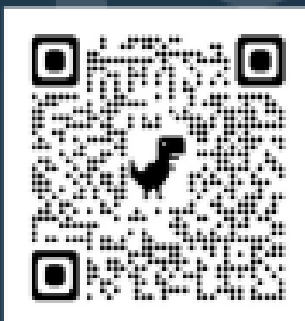
28,29,30,31ST  
MAY 2024

9AM - 3PM



TOM MANN PAVILION  
DEVON PARK, NEWARK,  
NG24 4QN

**£20 PER DAY**



DELIVERED BY EXPERIENCED, QUALIFIED FA  
COACHES AND TEACHERS, PACKED LUNCH AND  
REFILLABLE WATER BOTTLES REQUIRED.  
TO BOOK SCAN THE QR CODE







# Gloworm Festival

playmobil



## MAIN STAGE

FRIDAY

FitBoyz Tini

GLOW-E-OKE  
GLOWORM RAVE  
FAIRGROUND

SATURDAY

n.trance MADDIE MOATE

SPICEWORLD

TAKE THAT tribute | NATHAN HADLEY  
NIGEL CLARKE | MR. BLOBBY | BODGER & BADGER  
BING & FLOP | PLAYMOBIL RAVE | SOHAIL KASBY  
PAW PATROL PUP PUP BOOGIE  
SUBLIME SCIENCE

SUNDAY

PAT SHARP

ANDY DAYS  
DINO RAPS

noasis

lally

JOHNNY & THE DAIKIDROPS | MR. BLOBBY  
NIGEL CLARKE | TAYLOR SWIFT tribute  
BING & FLOP | BODGER & BADGER  
PAW PATROL PUP PUP BOOGIE | FOXBELLES  
PLAYMOBIL RAVE | SUBLIME SCIENCE

## BIG TOP

MAMA G

SLOW-LYMPICS | BACK IN THE DAY...  
BOOMBOX BOYS: BACK TO THE 90S  
MEN IN BLACK JUMP STILT PERFORMERS

## CIRCUS

CIRCUS SKILLS  
WHEEL OF DEATH  
ASTRAL CIRCUS  
CIRCUS HUB

## WHITE POST FARM

LITTLE FARMERS CLUB

SCALEY & CREEPY CRAWLIE CLUB  
BIRDS OF PREY  
MEET THE ANIMALS

## MEET & GREET

FRIDAY ONLY

MADDIE MOATE

ALONG THE WAYFARER



ELMER

ALONG THE WAYFARER



BODGERS BADGER

ALONG THE WAYFARER



DINOSAURS

ALONG THE WAYFARER



GILBERT GLOWORM

ALONG THE WAYFARER



MR. BLOBBY

SUNDAY ONLY

ANDY DAY

BODGERS BADGER | NIGEL CLARKE | DINOSAURS | GILBERT GLOWORM

## ZONES & WORKSHOPS

### CBEEBIES

BEDTIME STORIES  
MEET & GREET

### ELMER

STORY TIME  
ARTS & CRAFTS  
MEET & GREET  
BOOK SHOP

### THE HIVE

HOP WRESTLING  
GRAFFITI WORKSHOPS  
FAIRGROUND  
Lincs Sabers

### SMOBY PLAY ZONE

SMOBY  
AQUAPLAY

### ADVENTURE ZONE

MINI GOLF  
SKY TRAIL  
MINI SKY TRAIL  
MINI LAND ROVERS  
WIPE-OUT  
KAYAKING  
ARCHERY

### PLAYMOBIL ZONE

PLAY TABLES  
MEET & GREET

### PAW PATROLLER

PAW PATROL MISSION  
MEET & GREET  
GIVEAWAYS  
VIP

AARDMAN MODEL MAKING  
SOFT PLAY  
SUBLIME SCIENCE  
CHARACTER MEET & GREET

### ORGANIX BIG PICNIC

FAMILY PICNIC  
FACE PAINTING  
ARTS & CRAFTS  
A-Z OF GREAT FOOD  
MEET & GREET

### TINY TOTS

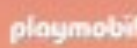
BABY CHANGE  
IMAGINE AVENUE  
THE CARRYING WORKS  
PHILOS WITH ROBOT REG  
PUPPIE & JUDY

### DINO ZONE

DINO TRAINING  
T-REX ENCOUNTER  
RAPTOR ENCOUNTER  
FOSSIL CRAFTS  
BABY DINOS

### GREAT OUTDOORS

WHITE POST FARM  
HANDMADE THEATRE  
SHERWOOD OUTLAWS  
MUD KITCHENS  
FOREST SCHOOL



BOOK NOW



16TH-18TH AUGUST 2024

HOLME MERREPOUNT COUNTRY PARK - NOTTINGHAM

WWW.GLOWORMFESTIVAL.CO.UK



Newark Sports and Fitness Centre,  
Dukeries and Southwell Leisure Centre

# HALF-TERM TIMETABLE

Tuesday 28<sup>th</sup> May – Sunday 2<sup>nd</sup> June 2024



**Includes 2 FREE activity sessions!**

Pre-book and pay for your activity online through  
[www.active4today.co.uk/leisurehub](http://www.active4today.co.uk/leisurehub)

Bookings open from 29<sup>th</sup> April

Telephone 01636 655780

Email [enquiries@active4today.co.uk](mailto:enquiries@active4today.co.uk)

# Newark Sports and Fitness Centre Swimming

## Main Pool

<b>Tuesday 28<sup>th</sup> May</b> 9:30am - 10:15am 1pm - 1:45pm 2pm - 2:45pm	Public Swim Public Swim <sup>A</sup> Public Swim <sup>A</sup>
<b>Wednesday 29<sup>th</sup> May</b> 10:30am - 11:15am 1pm - 1:45pm 2pm - 2:45pm 6:45pm - 7:30pm 7:30pm - 8:15pm	Disability/Public Swim <sup>**</sup> Public Swim <sup>A</sup> Public Swim <sup>A</sup> Public Swim Public Swim (2Lanes Only)
<b>Thursday 30<sup>th</sup> May</b> 9:30am - 10:30am 2pm - 2:45pm 5pm - 5:45pm	Public Swim Public Swim Fun Swim
<b>Friday 31<sup>st</sup> May</b> 10am - 10:45am 11am - 11:45am 2pm - 2:45pm	Inflatable Swim* Inflatable Swim* Public Swim
<b>Saturday 1<sup>st</sup> June</b> 11am - 12:30pm 2pm - 3pm 3:15pm - 4:15pm	Public Swim Inflatable Swim* Public Swim
<b>Sunday 2<sup>nd</sup> June</b> 10:30am - 11:30am 11:45am - 12:45pm 2pm - 3pm	Public Swim Public Swim Public Swim

<sup>A</sup> Height restrictions apply, max 17m and oblate swim 25m on their front. Max age 14yrs  
<sup>\*\*</sup> An open session for adults and Juniors with disabilities  
<sup>\*</sup> Paralympic lanes off for private hire  
Public Swims have fun floats and rafts available

## Teaching Pool

<b>Tuesday 28<sup>th</sup> May</b> 12 noon - 12:45pm 1pm - 1:45pm 2pm - 2:45pm	Public Swim Public Swim Public Swim
<b>Wednesday 29<sup>th</sup> May</b> 10:30am - 11:15am 11:45am - 12:30pm 1pm - 1:45pm 2pm - 2:45pm	Disability/Public Swim <sup>**</sup> Public Swim Public Swim Public Swim
<b>Thursday 30<sup>th</sup> May</b> 9:30am - 10:30am 1pm - 1:45pm 2pm - 2:45pm	Public Swim Public Swim Public Swim
<b>Friday 31<sup>st</sup> May</b> 10am - 10:45am 11am - 11:45am 1pm - 1:45pm 2pm - 2:45pm 3pm - 3:45pm 6:45pm - 7:30pm	Public Swim Public Swim Public Swim Public Swim Public Swim Public Swim
<b>Saturday 1<sup>st</sup> June</b> 11am - 12:30pm 2pm - 3pm 3:15pm - 4:15pm	Public Swim Public Swim Public Swim
<b>Sunday 2<sup>nd</sup> June</b> 9:15am - 10:15am 10:30am - 11:30am 11:45am - 12:45pm 2pm - 3pm 3:15pm - 4:15pm	Public Swim Public Swim Public Swim Public Swim Public Swim

Public Swims have fun floats and rafts available

## Public swim prices:

Juniors £4.50 (without Active Card £5.50) Adults £6 (without Active Card £7.50)  
Concession £5 (without Active Card £6) Inflatable Sessions £5.50 with an Active Card  
Public swimming is included in most memberships. Check website for details. Active Cards are Free for new customers and available at reception.

# Newark Sports and Fitness Centre Sports

## Junior Fitness (8-15yrs)

**Weekdays** 6am - 6pm  
**Weekends** 8am - 2:30pm  
**£5.50 per session**

The fitness suite is open daily for juniors to enjoy a workout!

The fitness suite is open to juniors outside of these times but they must be supervised by a responsible adult.

Juniors must attend an induction with an adult/carer prior to using the fitness suite. Please book this at reception. Normal admissions policy applies.

## Family Sport Session

**Wednesday 29<sup>th</sup> & Friday 31<sup>st</sup> May**  
**10am - 12noon**  
**£5.50 per session**

Come along for a morning of fun for all the family. Choose from badminton, short tennis or table tennis. Maximum 5 people per booking.

## Sports Camp (8-13yrs)

**Thursday 30<sup>th</sup> May**  
**9:30am - 1pm**  
**£7.50 per session**

Structured indoor sports giving children a great opportunity to try a variety of activities including access to the fitness suite plus a fun swim session so don't forget your kit! Please ensure children wear appropriate clothing, swimwear and footwear. Bring plenty to drink and a light snack.

Must be pre-booked and paid for on Leisurehub or at reception by 8am on the day of the activity. We will not accept bookings after this time.



[www.active4today.co.uk/leisurehub](http://www.active4today.co.uk/leisurehub)

[www.active4today.co.uk/leisurehub](http://www.active4today.co.uk/leisurehub)

# We need you!!!



## We want to celebrate your achievements outside of school!!

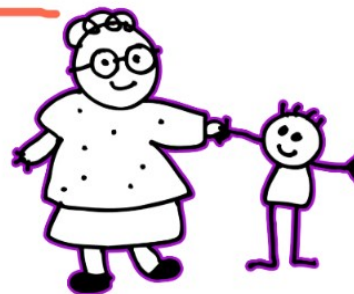


SEND your pictures, medals or certificates To :  
[parents@christchurch.notts.sch.uk](mailto:parents@christchurch.notts.sch.uk)

or drop into reception !



These will be displayed on our Celebration wall!!







SCAN TO FIND  
OUT MORE



Academic year 2024-25

## Wraparound Care for Christ Church CofE Primary School

High quality before and after school care  
every day the school is open!  
We are starting from Monday 3rd June to  
Friday 26th July!



Search Premier Education Wraparound Care



Based on over 20,000 reviews

# Premier Education are honoured to be able to provide the wraparound care at your school.



Our aim is to deliver a top quality, Ofsted registered provision, with a range of stimulating activities in a safe, secure and fun environment, providing an outstanding service for busy parents.

Parents can relax knowing their children are in safe hands as all staff have experience working with primary school children, have been DBS checked, and hold Paediatric First Aid and Safeguarding certificates.

Wraparound care sessions are open to children from Reception to Year 6, with no deposit or registration fee required. Healthy snacks are provided, with specific dietary requirements also being catered for.

## Christ Church CofE Primary School

**Before School Option:**  
07:30-08:50 = £6.75

**After School Options:**  
15:30-18:00 = £10.75 Full Session  
15:30-17:00 = £7.50 First Half Session  
16:30-18:00 = £7.50 Second Half Session

Book now at:  
[www.premier-education.com](http://www.premier-education.com)

Contact us at:  
[info@premier-education.com](mailto:info@premier-education.com)  
or 01853 488040

Ofsted registration number: 2781897

